

Harlow PramCrossings
Batch 3
LHAR153001
APPENDIX 1



Replacement to the Corner of Morningsons (49-100) Junction to Paringdon Road: (1 Pair)



The Maples Junction with Paringdon Road: (1 Pair)



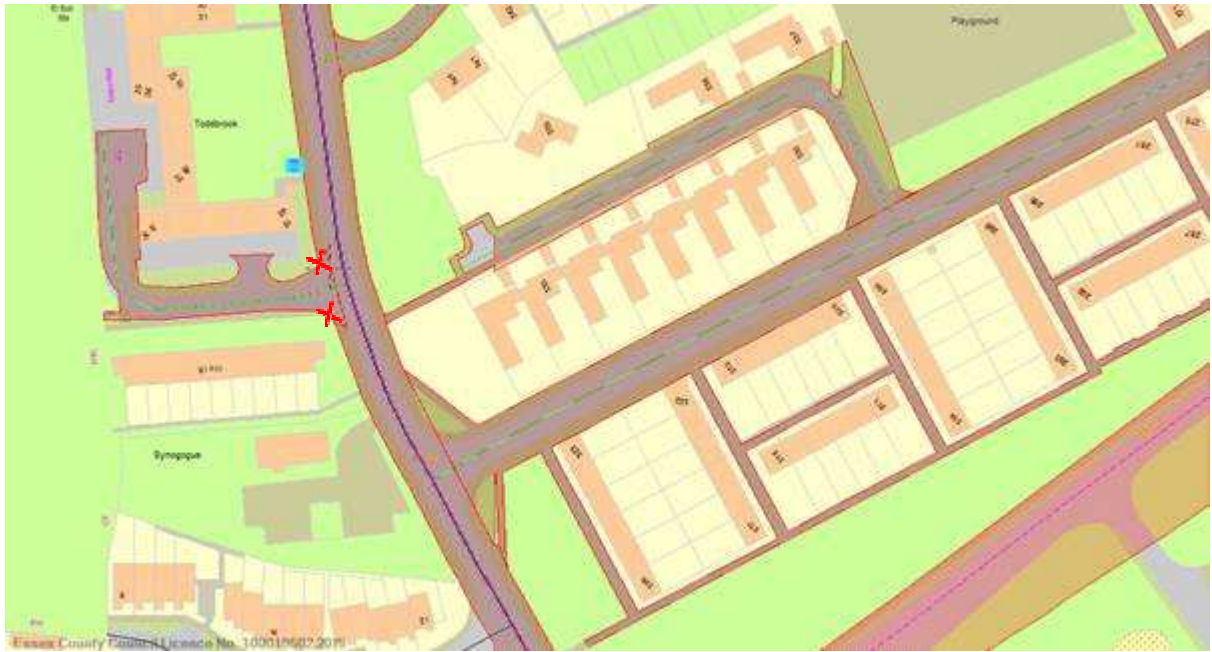
Replacement to the Corner of Morningsons (15-48) Junction with Paringdon Road: (1 replacement pair)



Burnett Park (1-3A) Junction with Parsloe Road: (One)
When exiting the junction there is a drop kerb on right but not the left:



Corner of Miles Close junction with Harberts: (1 Pair)



Toddbrook Junction with Harberts Road: (1 Pair)



Helions Road Junction with Harberts Road: (1 Pair)



Willowfield Junction with Tendring Road: (1 Pair)



GoldSmiths junction with Partridge Road: (1)



Junction with Kingsmoor Rd by the Community Centre.



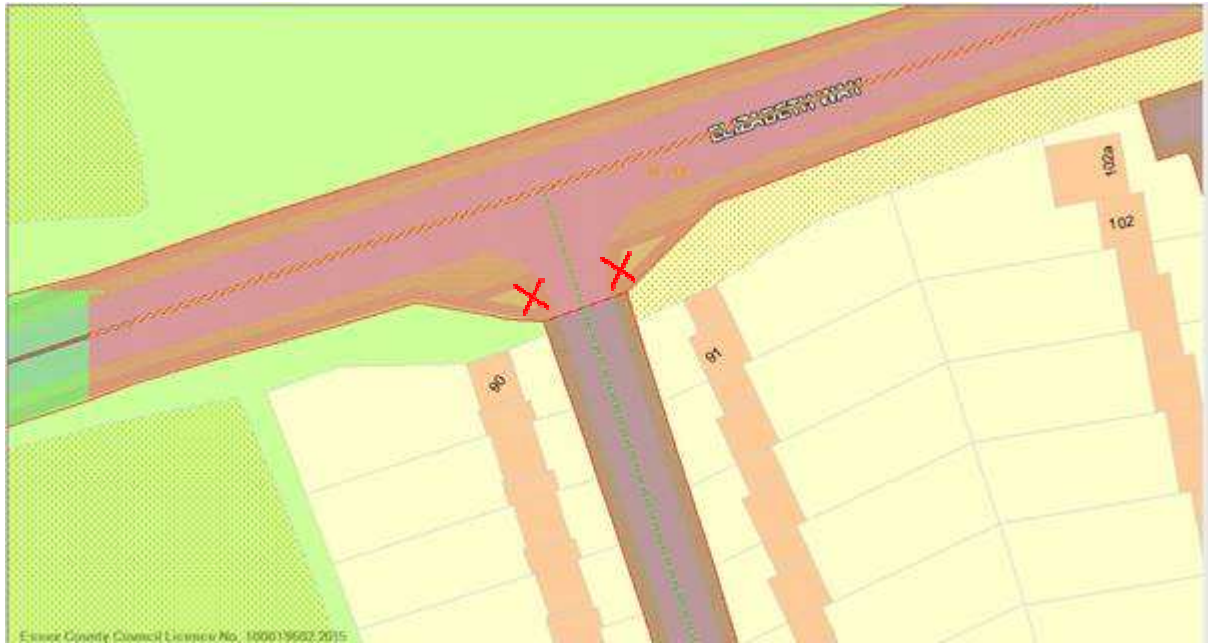
Greynoose Park between 119 – 1 (1 Pair)



Corner of Greygoose park 86 – 93 (1 Pair)



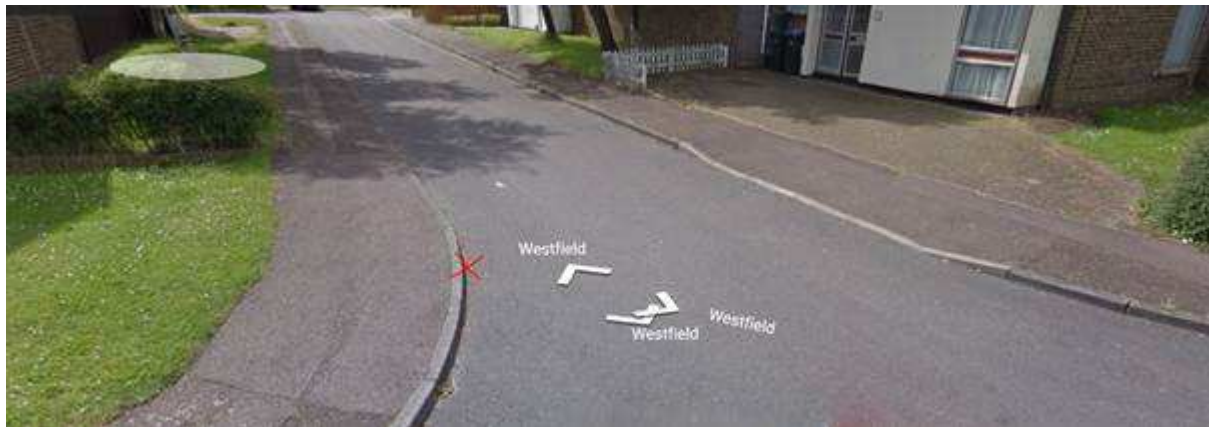
Greygoose Park Outside 125 (1 Pair)



Herons Wood Junction with Elizabeth Way (1 Pair)



Fold Croft between 170 – 158 (1 Pair)



Opposite 74 Westfield

There is a drop kerb on one side of the road and not the other:



Outside 72 – 8 Penlow Finchmoor (1 Pair)
Opposite 13
Between 42 – 16 (1 Pair)



Beside House Number 145 – Westfield (1 Pair)



House Number 43 – 58 – Westfield (Pair)



Church Road, Chapel Fields (Pair)